

Exhibit "B"
Legal Description of Protected Property

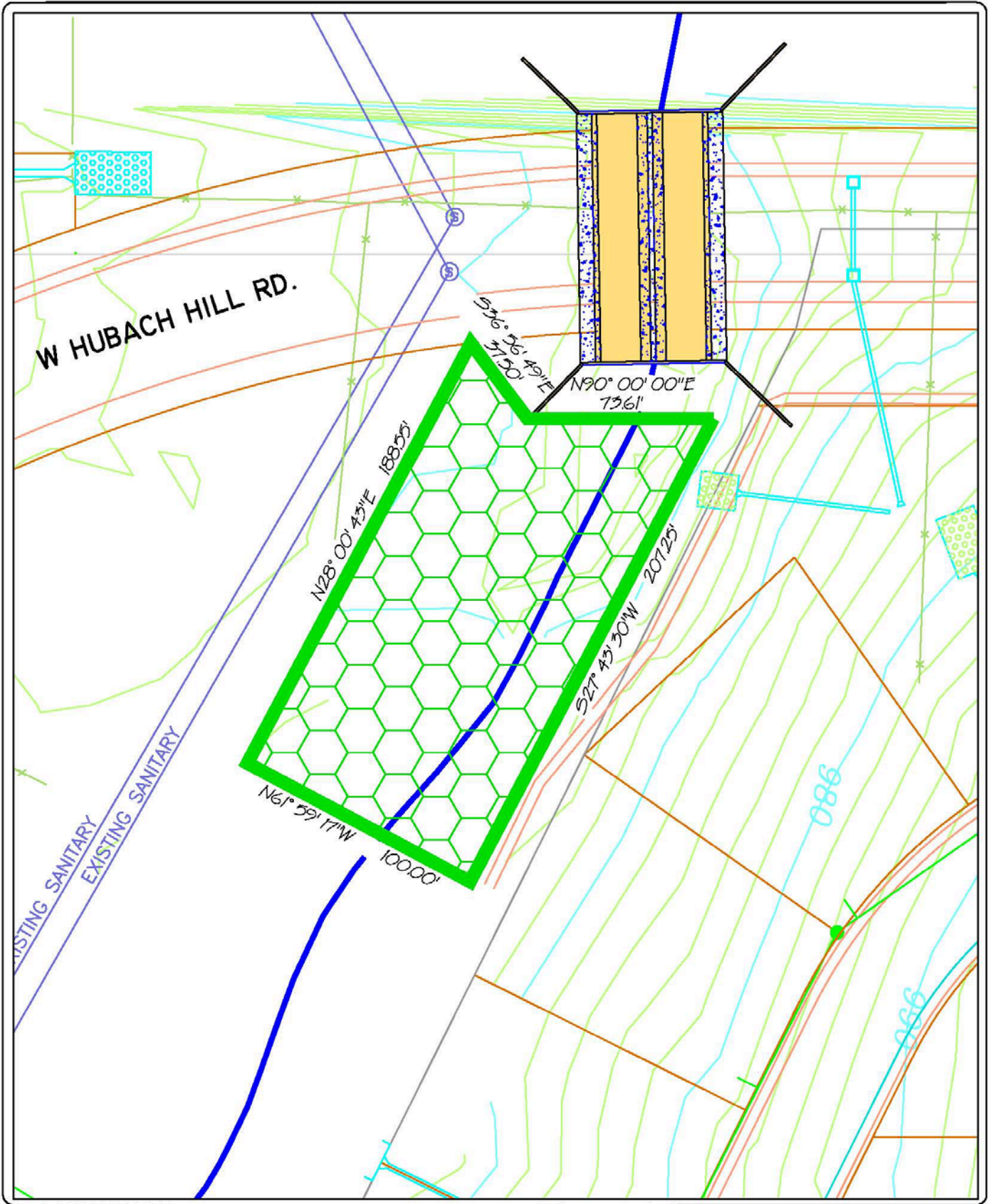
LEGAL DESCRIPTION

A TRACT OF LAND LYING IN THE NORTHWEST QUARTER OF SECTION 28 AND IN THE NORTHEAST QUARTER OF SECTION 29, ALL IN TOWNSHIP 46 NORTH, RANGE 32 WEST, IN THE CITY OF RAYMORE, CASS COUNTY, MISSOURI, MORE PARTICULARLY DESCRIBED AS FOLLOWS:
COMMENCING AT THE NORTHEAST CORNER OF THE NORTHEAST QUARTER OF SECTION 29, TOWNSHIP 46 NORTH, RANGE 32 WEST;
THENCE SOUTH 00 DEGREES 25 MINUTES 43 SECONDS EAST, A DISTANCE OF 40.00 FEET; THENCE NORTH 89 DEGREES 59 MINUTES 53 SECONDS WEST, A DISTANCE OF 80.41 FEET TO A POINT OF CURVATURE; THENCE ON A CURVE TO THE RIGHT HAVING A RADIUS OF 340.00 FEET, A CENTRAL ANGLE OF 05 DEGREES 14 MINUTES 39 SECONDS, AN ARC DISTANCE OF 31.12 FEET; THENCE NORTH 84 DEGREES 45 MINUTES 12 SECONDS WEST, A DISTANCE OF 81.92 FEET TO A POINT OF CURVATURE; THENCE ON A CURVE TO THE LEFT HAVING A RADIUS OF 260.00 FEET, A CENTRAL ANGLE OF 05 DEGREES 14 MINUTES 41 SECONDS, AN ARC DISTANCE OF 23.80 FEET; THENCE NORTH 89 DEGREES 59 MINUTES 53 SECONDS WEST, A DISTANCE OF 793.83 FEET; THENCE SOUTH 26 DEGREES 28 MINUTES 24 SECONDS WEST, A DISTANCE OF 41.92 FEET; THENCE SOUTH 90 DEGREES 00 MINUTES 00 SECONDS WEST, A DISTANCE OF 14.03 FEET TO THE TRUE POINT OF BEGINNING; THENCE SOUTH 27 DEGREES 43 MINUTES 30 SECONDS WEST, A DISTANCE OF 205.22 FEET; THENCE NORTH 61 DEGREES 59 MINUTES 17 SECONDS WEST, A DISTANCE OF 100.00 FEET; THENCE NORTH 28 DEGREES 00 MINUTES 43 SECONDS EAST, A DISTANCE OF 188.55 FEET; THENCE SOUTH 36 DEGREES 56 MINUTES 49 SECONDS EAST, A DISTANCE OF 37.50 FEET; THENCE NORTH 90 DEGREES 00 MINUTES 00 SECONDS EAST, A DISTANCE OF 73.61 FEET TO THE POINT OF BEGINNING. THE ABOVE-DESCRIBED TRACT CONTAINS 18611.44 SQUARE FEET, OR 0.43 ACRES, MORE OR LESS.

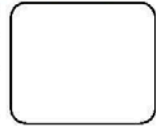
EXHIBIT A - MITIGATION
PRAIRIE VIEW
GOODRANCH



Terra Technologies 4707 W. 135th St., Ste. 280
Leawood, Kansas 66224
Tel 913.385.9560 Fax 913.385.9295



NO. 2	EXHIBIT A - MITIGATION
	PRAIRIE VIEW
	GOODRANCH




Terra Technologies

4707 W. 135th St., Ste. 280
Leawood, Kansas
66224
Tel 913.385.0560 Fax 913.385.5295