

EXHIBIT "H"
PRESERVATION EASEMENT-INDEX
PART OF THE N. 1/2 SECTION 14, T. 14 S., R. 24 E.,
IN THE CITY OF OVERLAND PARK, JOHNSON COUNTY, KANSAS.



H	5.41 AC.
I	2.98 AC.
J	2.30 AC.
K	6.95 AC.
L	6.27 AC.



SCALE: 1"=1000'



LEGEND

A = EXHIBIT DESIGNATION

Z:\P\120737\PRESERVATION ESMT.dwg Layout:INDEX Feb 07, 2013 - 10:28am



PLANNING
 ENGINEERING
 IMPLEMENTATION

PHELPS ENGINEERING, INC
 1270 N. Winchester
 Olathe, Kansas 66061

(913) 393-1155
 Fax (913) 393-1166
 www.phelpsengineering.com

PROJECT NO. 120737
DATE: 11-28-12
BY: DAG

EXHIBIT "H"
PRESERVATION EASEMENT


**PART OF THE N.W. 1/4 SECTION 14, T. 14 S., R. 24 E.,
IN THE CITY OF OVERLAND PARK, JOHNSON COUNTY, KANSAS.**

LEGAL DESCRIPTION:

ALL THAT PART OF TRACT G, MILLS FARM, FOURTH PLAT, A PLATTED SUBDIVISION OF LAND AND ALL THAT PART OF THE NORTHWEST QUARTER OF SECTION 14, TOWNSHIP 14 SOUTH, RANGE 24 EAST, ALL IN THE CITY OF OVERLAND PARK, JOHNSON COUNTY, KANSAS, BEING MORE PARTICULARLY DESCRIBED AS FOLLOWS:

COMMENCING AT THE NORTHWEST CORNER OF THE NORTHWEST QUARTER OF SAID SECTION 14; THENCE N 88°14'23" E, ALONG THE NORTH LINE OF THE NORTHWEST QUARTER OF SAID SECTION 14, A DISTANCE OF 774.76 FEET; THENCE S 1°45'37" E, A DISTANCE OF 65.00 FEET TO THE POINT OF BEGINNING; THENCE N 88°14'23" E, A DISTANCE OF 181.11 FEET; THENCE S 1°45'37" E, A DISTANCE OF 451.06 FEET; THENCE N 88°14'23" E, A DISTANCE OF 88.72 FEET; THENCE S 12°00'00" W, A DISTANCE OF 60.59 FEET; THENCE S 33°00'00" E, A DISTANCE OF 99.79 FEET; THENCE N 90°00'00" E, A DISTANCE OF 37.23 FEET; THENCE S 29°00'00" W, A DISTANCE OF 33.01 FEET; THENCE S 41°00'00" E, A DISTANCE OF 105.96 FEET; THENCE S 28°42'00" E, A DISTANCE OF 103.01 FEET; THENCE S 32°16'00" W, A DISTANCE OF 53.67 FEET; THENCE S 18°32'00" W, A DISTANCE OF 99.92 FEET; THENCE S 72°29'00" W, A DISTANCE OF 86.83 FEET; THENCE N 90°00'00" W, A DISTANCE OF 197.42 FEET; THENCE N 12°00'00" W, A DISTANCE OF 73.46 FEET; THENCE N 6°12'00" E, A DISTANCE OF 75.90 FEET; THENCE N 10°36'00" W, A DISTANCE OF 129.49 FEET; THENCE N 67°36'00" W, A DISTANCE OF 78.92 FEET; THENCE N 28°08'08" W, A DISTANCE OF 75.92 FEET; THENCE N 6°47'35" W, A DISTANCE OF 123.09 FEET; THENCE N 25°31'00" E, A DISTANCE OF 145.67 FEET; THENCE N 6°01'48" E, A DISTANCE OF 127.87 FEET; THENCE N 13°16'36" W, A DISTANCE OF 203.94 FEET TO THE POINT OF BEGINNING, CONTAINING 5.41 ACRES, MORE OR LESS.

I HEREBY CERTIFY THAT THIS REAL PROPERTY LEGAL DESCRIPTION HAS BEEN PREPARED BY ME OR UNDER MY DIRECT SUPERVISION.

BY:  DOUGLAS E. UBBEN, K.S. LS-1362



PLANNING
ENGINEERING
IMPLEMENTATION

PHELPS ENGINEERING, INC
1270 N. Winchester
Olathe, Kansas 66061

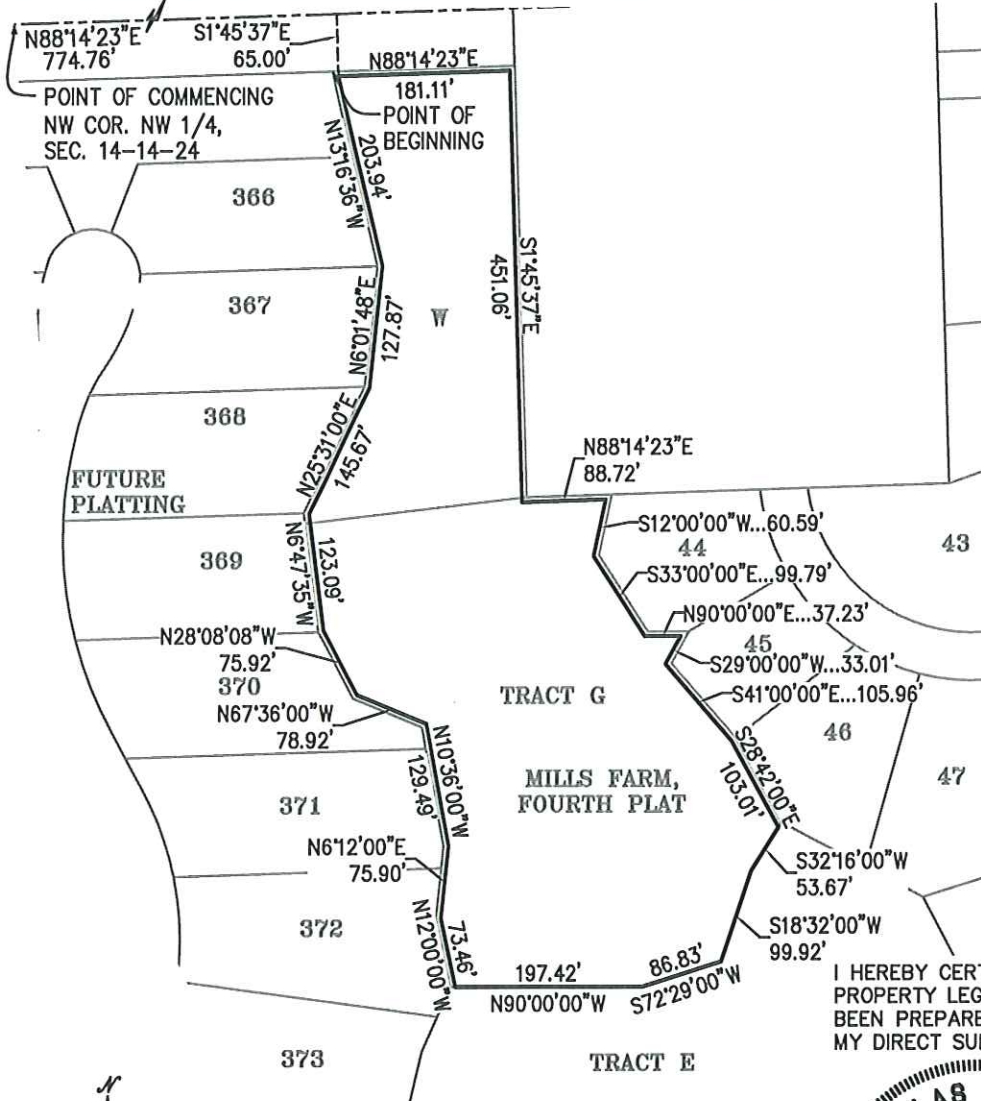
(913) 393-1155
Fax (913) 393-1166
www.phelpsenineering.com

PROJECT NO. 120737
DATE: 1-18-13
BY: DAG

EXHIBIT "H"

PRESERVATION EASEMENT

PART OF THE N.W. 1/4 SECTION 14, T. 14 S., R. 24 E., IN THE CITY OF OVERLAND PARK, JOHNSON COUNTY, KANSAS.



I HEREBY CERTIFY THAT THIS REAL PROPERTY LEGAL DESCRIPTION HAS BEEN PREPARED BY ME OR UNDER MY DIRECT SUPERVISION.



SCALE: 1"=200'



Z:\P\120737\PRESERVATION ESMT.dwg Layout:H-2 Feb 07, 2013 - 10:26am

SHEET 2 OF 2



PHELPS ENGINEERING, INC
1270 N. Winchester
Olathe, Kansas 66061

(913) 393-1155
Fax (913) 393-1166
www.phelpsengineering.com

PROJECT NO. 120737
DATE: 1-18-13
BY: DAG

EXHIBIT "I"
PRESERVATION EASEMENT
PART OF THE S.W. 1/4 SECTION 14, T. 14 S., R. 24 E.,
IN THE CITY OF OVERLAND PARK, JOHNSON COUNTY, KANSAS.

LEGAL DESCRIPTION:

ALL THAT PART OF THE SOUTHWEST QUARTER OF SECTION 14, TOWNSHIP 14 SOUTH, RANGE 24 EAST, IN THE CITY OF OVERLAND PARK, JOHNSON COUNTY, KANSAS, BEING MORE PARTICULARLY DESCRIBED AS FOLLOWS:

COMMENCING AT THE SOUTHWEST CORNER OF THE SOUTHWEST QUARTER OF SAID SECTION 14; THENCE N 01°59'02" W, ALONG THE WEST LINE OF THE SOUTHWEST QUARTER OF SAID SECTION 14, A DISTANCE OF 1132.98 FEET; THENCE N 88°00'58" E, A DISTANCE OF 2079.62 FEET TO THE POINT OF BEGINNING; THENCE N 67°26'27" E, A DISTANCE OF 143.11 FEET; THENCE S 10°30'00" E, A DISTANCE OF 80.29 FEET; THENCE S 18°00'00" E, A DISTANCE OF 103.05 FEET; THENCE S 14°51'16" E, A DISTANCE OF 91.99 FEET; THENCE N 84°24'00" E, A DISTANCE OF 137.41 FEET; THENCE S 14°57'00" E, A DISTANCE OF 58.01 FEET; THENCE SOUTHERLY AND SOUTHWESTERLY ON A CURVE TO THE RIGHT, SAID CURVE BEING TANGENT TO THE LAST DESCRIBED COURSE AND HAVING A RADIUS OF 465.00 FEET, AN ARC DISTANCE OF 293.31 FEET; THENCE S 75°17'05" W, A DISTANCE OF 54.21 FEET; THENCE S 25°10'58" W, A DISTANCE OF 96.69 FEET; THENCE S 30°57'26" E, A DISTANCE OF 33.24 FEET; THENCE SOUTHWESTERLY ON A CURVE TO THE RIGHT, SAID CURVE HAVING AN INITIAL TANGENT BEARING OF S 39°50'01" W AND A RADIUS OF 465.00 FEET, AN ARC DISTANCE OF 31.78 FEET; THENCE S 43°45'00" W, A DISTANCE OF 39.27 FEET; THENCE N 46°15'00" W, A DISTANCE OF 70.14 FEET; THENCE N 14°00'00" W, A DISTANCE OF 86.99 FEET; THENCE N 11°00'00" W, A DISTANCE OF 90.40 FEET; THENCE N 4°18'00" E, A DISTANCE OF 96.23 FEET; THENCE N 18°54'00" W, A DISTANCE OF 179.37 FEET; THENCE N 15°00'00" E, A DISTANCE OF 60.16 FEET; THENCE N 20°35'33" W, A DISTANCE OF 113.97 FEET; THENCE N 34°30'00" W, A DISTANCE OF 86.62 FEET TO THE POINT OF BEGINNING, CONTAINING 2.98 ACRES, MORE OR LESS.

I HEREBY CERTIFY THAT THIS REAL PROPERTY LEGAL DESCRIPTION HAS BEEN PREPARED BY ME OR UNDER MY DIRECT SUPERVISION.

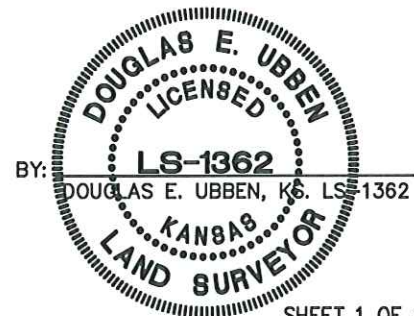
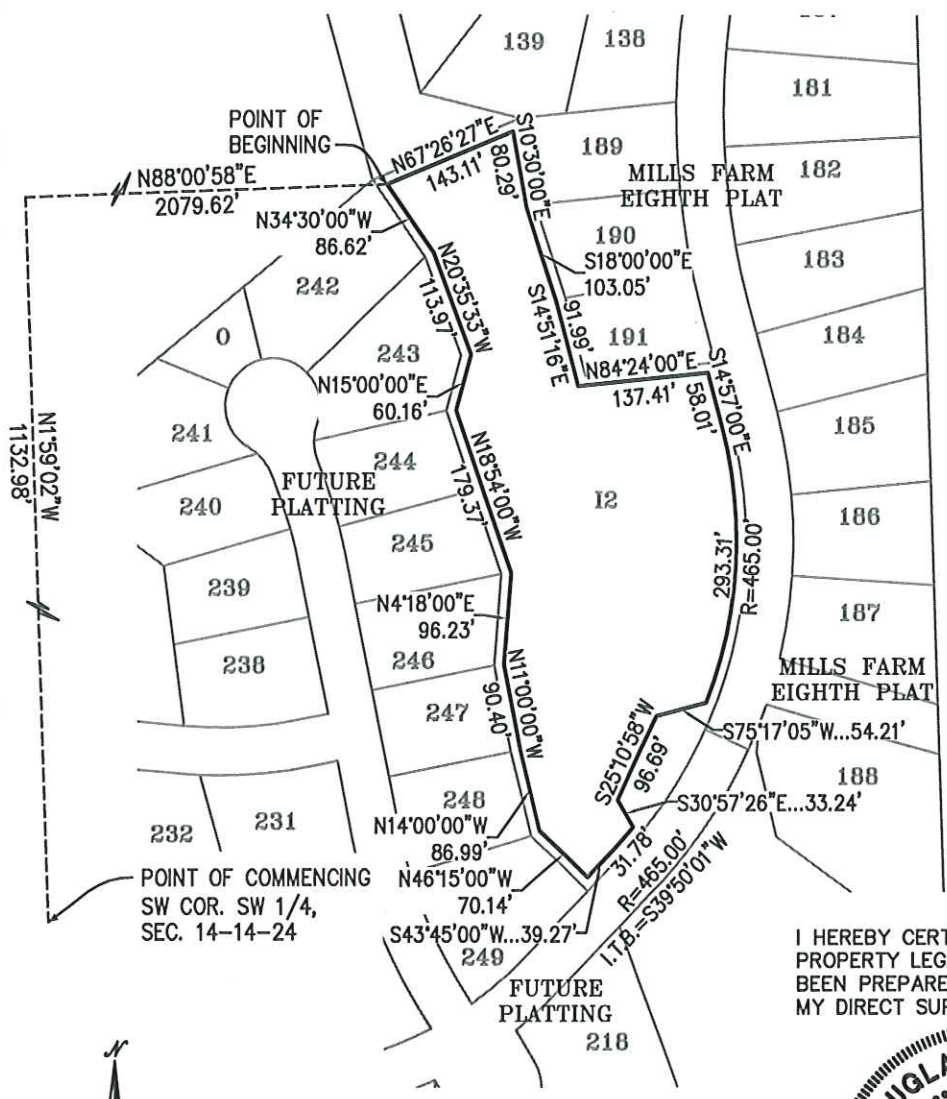


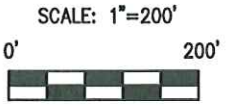
EXHIBIT "I"

PRESERVATION EASEMENT

**PART OF THE S.W. 1/4 SECTION 14, T. 14 S., R. 24 E.,
IN THE CITY OF OVERLAND PARK, JOHNSON COUNTY, KANSAS.**



I HEREBY CERTIFY THAT THIS REAL PROPERTY LEGAL DESCRIPTION HAS BEEN PREPARED BY ME OR UNDER MY DIRECT SUPERVISION.



Z:\P\120737\PRESERVATION ESMT.dwg Layout:1-2 Feb 07, 2013 - 10:27am

SHEET 2 OF 2

EXHIBIT "J"
PRESERVATION EASEMENT
PART OF THE S.W. 1/4 SECTION 14, T. 14 S., R. 24 E.,
IN THE CITY OF OVERLAND PARK, JOHNSON COUNTY, KANSAS.

LEGAL DESCRIPTION:

ALL THAT PART OF THE SOUTHWEST QUARTER OF SECTION 14, TOWNSHIP 14 SOUTH, RANGE 24 EAST, IN THE CITY OF OVERLAND PARK, JOHNSON COUNTY, KANSAS, BEING MORE PARTICULARLY DESCRIBED AS FOLLOWS:

COMMENCING AT THE SOUTHWEST CORNER OF THE SOUTHWEST QUARTER OF SAID SECTION 14; THENCE N 88°06'16" E, ALONG THE SOUTH LINE OF THE SOUTHWEST QUARTER OF SAID SECTION 14, A DISTANCE OF 2423.24 FEET; THENCE N 1°53'44" W, A DISTANCE OF 10.00 FEET TO THE POINT OF BEGINNING; THENCE N 19°14'23" W, A DISTANCE OF 153.27 FEET; THENCE N 20°55'00" W, A DISTANCE OF 205.36 FEET; THENCE N 43°45'00" E, A DISTANCE OF 47.05 FEET; THENCE NORTHEASTERLY ON A CURVE TO THE LEFT, SAID CURVE BEING TANGENT TO THE LAST DESCRIBED COURSE AND HAVING A RADIUS OF 535.00 FEET, AN ARC DISTANCE OF 24.85 FEET; THENCE S 31°15'52" E, A DISTANCE OF 36.69 FEET; THENCE N 58°44'08" E, A DISTANCE OF 62.20 FEET; THENCE N 14°42'55" W, A DISTANCE OF 74.27 FEET; THENCE NORTHEASTERLY ON A CURVE TO THE LEFT, SAID CURVE HAVING AN INITIAL TANGENT BEARING OF N 31°24'57" E, AN A RADIUS OF 535.00 FEET, AN ARC DISTANCE OF 48.90 FEET; THENCE S 13°24'00" E, A DISTANCE OF 79.66 FEET; THENCE S 53°30'00" E, A DISTANCE OF 221.00 FEET; THENCE S 1°54'06" E, A DISTANCE OF 288.77 FEET; THENCE S 88°06'16" W, A DISTANCE OF 208.18 FEET TO THE POINT OF BEGINNING, CONTAINING 2.30 ACRES, MORE OR LESS.

I HEREBY CERTIFY THAT THIS REAL PROPERTY LEGAL DESCRIPTION HAS BEEN PREPARED BY ME OR UNDER MY DIRECT SUPERVISION.

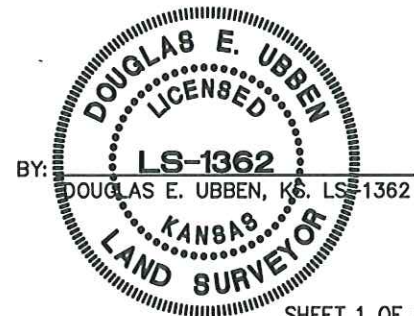
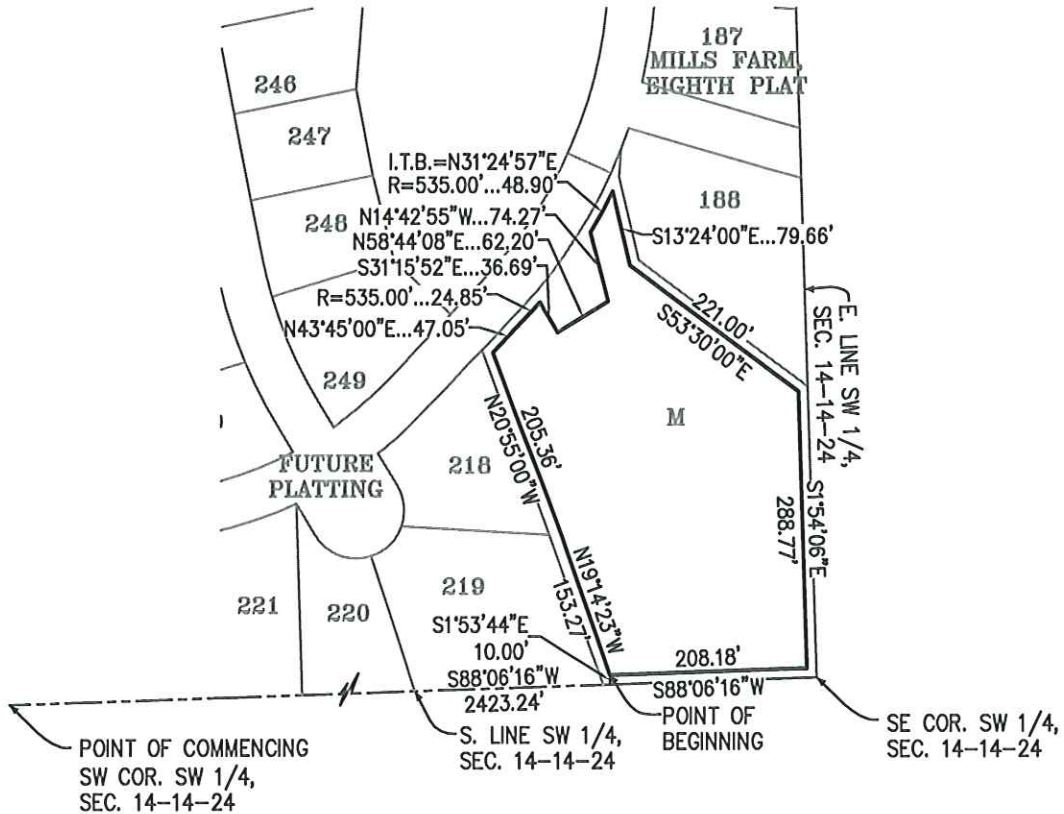


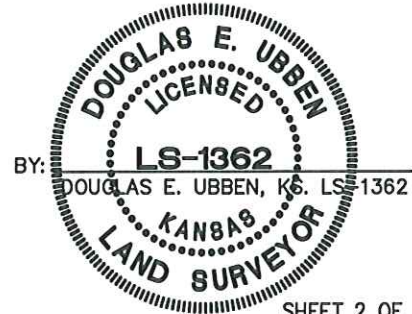
EXHIBIT "J"
PRESERVATION EASEMENT
PART OF THE S.W. 1/4 SECTION 14, T. 14 S., R. 24 E.,
IN THE CITY OF OVERLAND PARK, JOHNSON COUNTY, KANSAS.



I HEREBY CERTIFY THAT THIS REAL PROPERTY LEGAL DESCRIPTION HAS BEEN PREPARED BY ME OR UNDER MY DIRECT SUPERVISION.



SCALE: 1"=200'



Z:\P\120737\PRESERVATION ESMT.dwg Layout: J-2 Feb 07, 2013 - 10:27am

SHEET 2 OF 2



PHELPS ENGINEERING, INC
 1270 N. Winchester
 Olathe, Kansas 66061

(913) 393-1155
 Fax (913) 393-1166
 www.phelpsengineering.com

PROJECT NO. 120737
 DATE: 1-18-13
 BY: DAG

EXHIBIT "K"
PRESERVATION EASEMENT
PART OF THE W. 1/2 SECTION 14, T. 14 S., R. 24 E.,
IN THE CITY OF OVERLAND PARK, JOHNSON COUNTY, KANSAS.

LEGAL DESCRIPTION:

ALL THAT PART OF TRACT L2, MILLS FARM, FIFTH PLAT, A PLATTED SUBDIVISION OF LAND AND ALL THAT PART OF THE WEST ONE-HALF OF SECTION 14, TOWNSHIP 14 SOUTH, RANGE 24 EAST, ALL IN THE CITY OF OVERLAND PARK, JOHNSON COUNTY, KANSAS, BEING MORE PARTICULARLY DESCRIBED AS FOLLOWS:

COMMENCING AT THE SOUTHWEST CORNER OF THE NORTHWEST QUARTER OF SAID SECTION 14; THENCE N 88°10'12" E, ALONG THE SOUTH LINE OF THE NORTHWEST QUARTER OF SAID SECTION 14, A DISTANCE OF 163.39 FEET TO THE POINT OF BEGINNING; THENCE N 23°40'30" E, A DISTANCE OF 183.31 FEET; THENCE N 42°24'53" E, A DISTANCE OF 58.43 FEET; THENCE N 40°07'24" E, A DISTANCE OF 281.42 FEET; THENCE N 14°00'56" E, A DISTANCE OF 127.67 FEET; THENCE N 3°46'18" W, A DISTANCE OF 76.77 FEET; THENCE N 1°38'12" W, A DISTANCE OF 108.10 FEET; THENCE N 21°56'41" E, A DISTANCE OF 109.72 FEET; THENCE S 73°15'00" E, A DISTANCE OF 346.44 FEET; THENCE S 5°51'00" W, A DISTANCE OF 75.05 FEET; THENCE S 3°00'00" E, A DISTANCE OF 157.15 FEET; THENCE S 23°10'25" E, A DISTANCE OF 113.05 FEET; THENCE SOUTHWESTERLY AND SOUTHERLY ON A CURVE TO THE LEFT, SAID CURVE HAVING AN INITIAL TANGENT BEARING OF S 61°02'38" W AND A RADIUS OF 250.00 FEET, AN ARC DISTANCE OF 244.47 FEET; THENCE S 5°09'00" W, A DISTANCE OF 16.81 FEET; THENCE N 84°51'00" W, A DISTANCE OF 118.75 FEET; THENCE S 51°21'48" W, A DISTANCE OF 248.37 FEET; THENCE S 14°31'25" W, A DISTANCE OF 35.13 FEET; THENCE S 88°10'12" W, A DISTANCE OF 284.51 FEET TO THE POINT OF BEGINNING, CONTAINING 6.95 ACRES, MORE OR LESS.

I HEREBY CERTIFY THAT THIS REAL PROPERTY LEGAL DESCRIPTION HAS BEEN PREPARED BY ME OR UNDER MY DIRECT SUPERVISION.

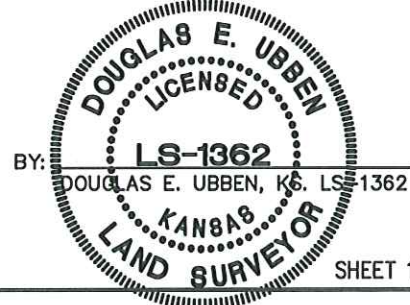
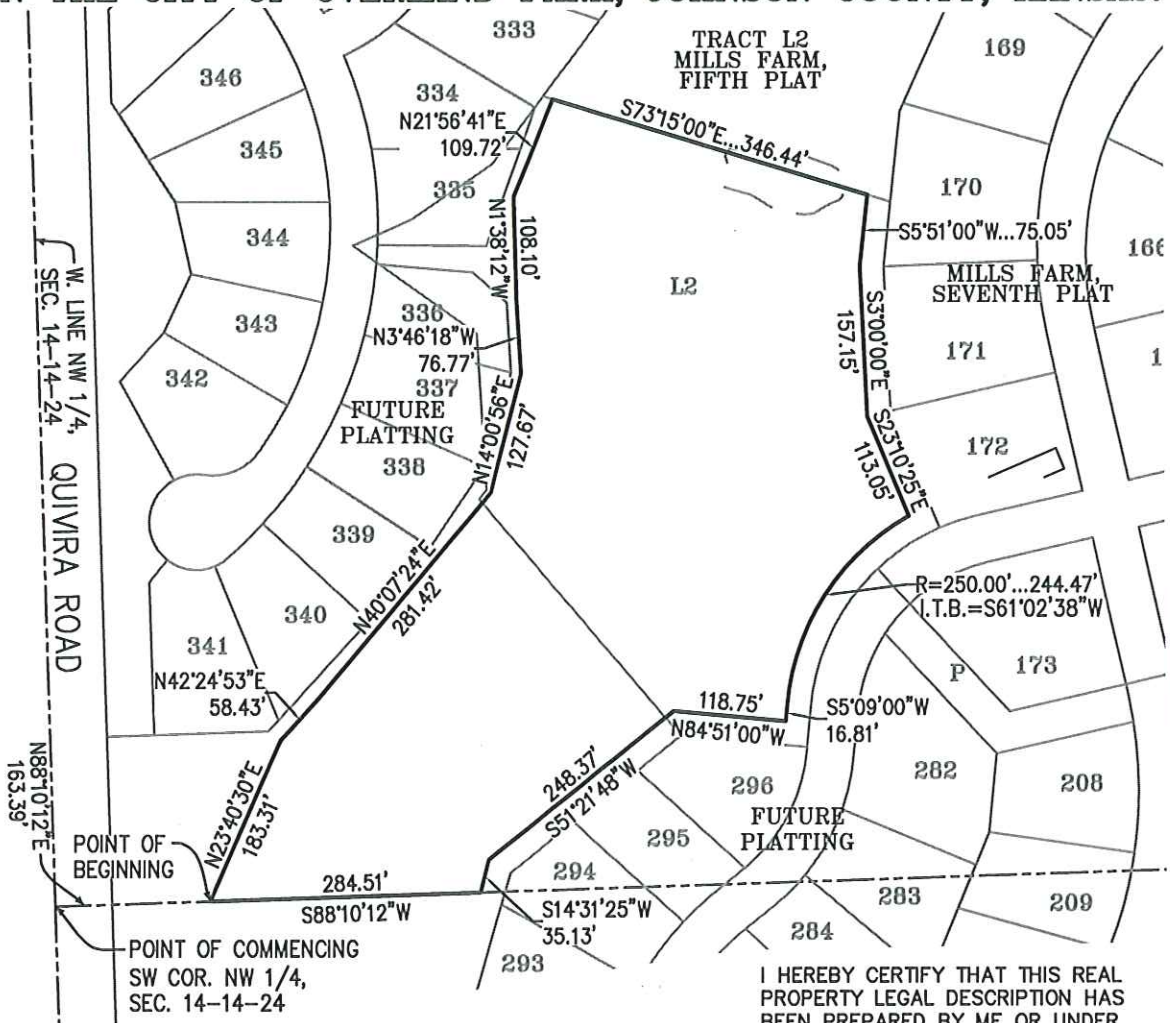


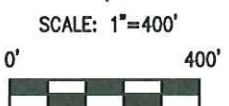
EXHIBIT "K"

PRESERVATION EASEMENT

PART OF THE W. 1/2 SECTION 14, T. 14 S., R. 24 E., IN THE CITY OF OVERLAND PARK, JOHNSON COUNTY, KANSAS.



I HEREBY CERTIFY THAT THIS REAL PROPERTY LEGAL DESCRIPTION HAS BEEN PREPARED BY ME OR UNDER MY DIRECT SUPERVISION.



Z:\P\120737\PRESERVATION ESMT.dwg Layout:K-2 Feb 07, 2013 - 10:28am

SHEET 2 OF 2

EXHIBIT "L"
RESTORATION EASEMENT


**PART OF THE W. 1/2 SECTION 14, T. 14 S., R. 24 E.,
IN THE CITY OF OVERLAND PARK, JOHNSON COUNTY, KANSAS.**

LEGAL DESCRIPTION:

ALL THAT PART OF THE WEST ONE-HALF OF SECTION 14, TOWNSHIP 14 SOUTH, RANGE 24 EAST, IN THE CITY OF OVERLAND PARK, JOHNSON COUNTY, KANSAS, BEING MORE PARTICULARLY DESCRIBED AS FOLLOWS:

COMMENCING AT THE SOUTHWEST CORNER OF THE NORTHWEST QUARTER OF SAID SECTION 14; THENCE N 88°10'12" E, ALONG THE SOUTH LINE OF THE NORTHWEST QUARTER OF SAID SECTION 14, A DISTANCE OF 70.00 FEET TO THE POINT OF BEGINNING; THENCE N 1°56'42" W, A DISTANCE OF 164.93 FEET; THENCE N 88°03'18" E, A DISTANCE OF 172.65 FEET; THENCE S 23°40'30" W, A DISTANCE OF 183.31 FEET; THENCE N 88°10'12" E, A DISTANCE OF 284.51 FEET; THENCE S 16°15'23" W, A DISTANCE OF 340.16 FEET; THENCE S 17°55'59" E, A DISTANCE OF 66.47 FEET; THENCE S 77°49'42" W, A DISTANCE OF 118.38 FEET; THENCE S 12°10'18" E, A DISTANCE OF 20.00 FEET; THENCE N 77°49'42" E, A DISTANCE OF 120.40 FEET; THENCE S 17°55'59" E, A DISTANCE OF 59.80 FEET; THENCE: S 38°51'54" W, A DISTANCE OF 108.34 FEET; THENCE: S 6°09'25" W, A DISTANCE OF 7.77 FEET; THENCE: N 59°01'12" W, A DISTANCE OF 56.02 FEET; THENCE: S 69°15'11" W, A DISTANCE OF 25.48 FEET; THENCE: S 59°01'12" E, A DISTANCE OF 81.05 FEET; THENCE: S 6°09'25" W, A DISTANCE OF 134.87 FEET; THENCE: S 20°54'58" W, A DISTANCE OF 71.12 FEET; THENCE: S 24°32'26" W, A DISTANCE OF 160.65 FEET; THENCE: S 22°53'43" W, A DISTANCE OF 196.33 FEET; THENCE: N 71°06'11" W, A DISTANCE OF 37.94 FEET; THENCE: N 1°59'02" W, A DISTANCE OF 1083.78 FEET TO THE POINT OF BEGINNING, CONTAINING 6.27 ACRES, MORE OR LESS.

I HEREBY CERTIFY THAT THIS REAL PROPERTY LEGAL DESCRIPTION HAS BEEN PREPARED BY ME OR UNDER MY DIRECT SUPERVISION.

BY:  DOUGLAS E. UBBEN, K.S. LS-1362

Z:\P\120737\PRESERVATION ESMT.dwg Layout:L-1 Feb 07, 2013 - 10:28am

SHEET 1 OF 2



PLANNING
ENGINEERING
IMPLEMENTATION

PHELPS ENGINEERING, INC
1270 N. Winchester
Olathe, Kansas 66061

(913) 393-1155
Fax (913) 393-1166
www.phelpsengineering.com

PROJECT NO. 120737
DATE: 1-18-13
BY: DAG

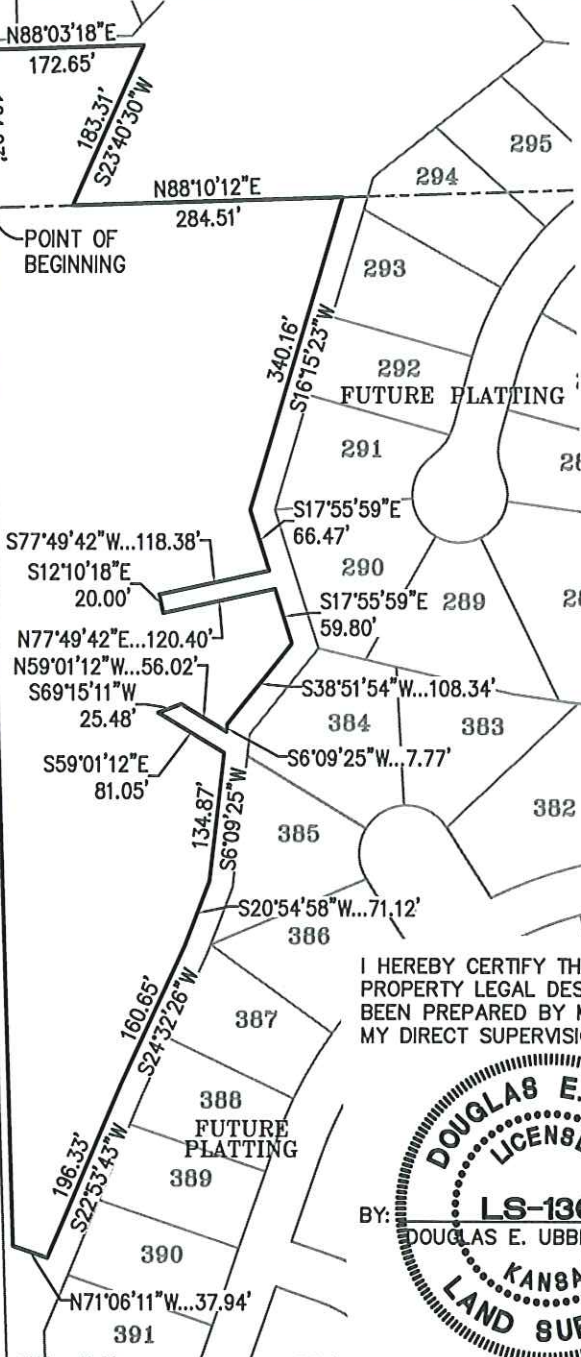
EXHIBIT "L"

RESTORATION EASEMENT

**PART OF THE W. 1/2 SECTION 14, T. 14 S., R. 24 E.,
IN THE CITY OF OVERLAND PARK, JOHNSON COUNTY, KANSAS.**

POINT OF COMMENCING
SW COR. NW 1/4,
SEC. 14-14-24

QUIVIRA ROAD



I HEREBY CERTIFY THAT THIS REAL PROPERTY LEGAL DESCRIPTION HAS BEEN PREPARED BY ME OR UNDER MY DIRECT SUPERVISION.



BY: DOUGLAS E. UBBEN, K.S. LS-1362



SCALE: 1"=400'



Z:\P\120737\PRESERVATION ESMT.dwg Layout:L-2 Feb 07, 2013 - 10:28am

SHEET 2 OF 2



PLANNING
ENGINEERING
IMPLEMENTATION

PHELPS ENGINEERING, INC
1270 N. Winchester
Olathe, Kansas 66061

(913) 393-1155
Fax (913) 393-1166
www.phelpsenengineering.com

PROJECT NO. 120737
DATE: 1-18-13
BY: DAG