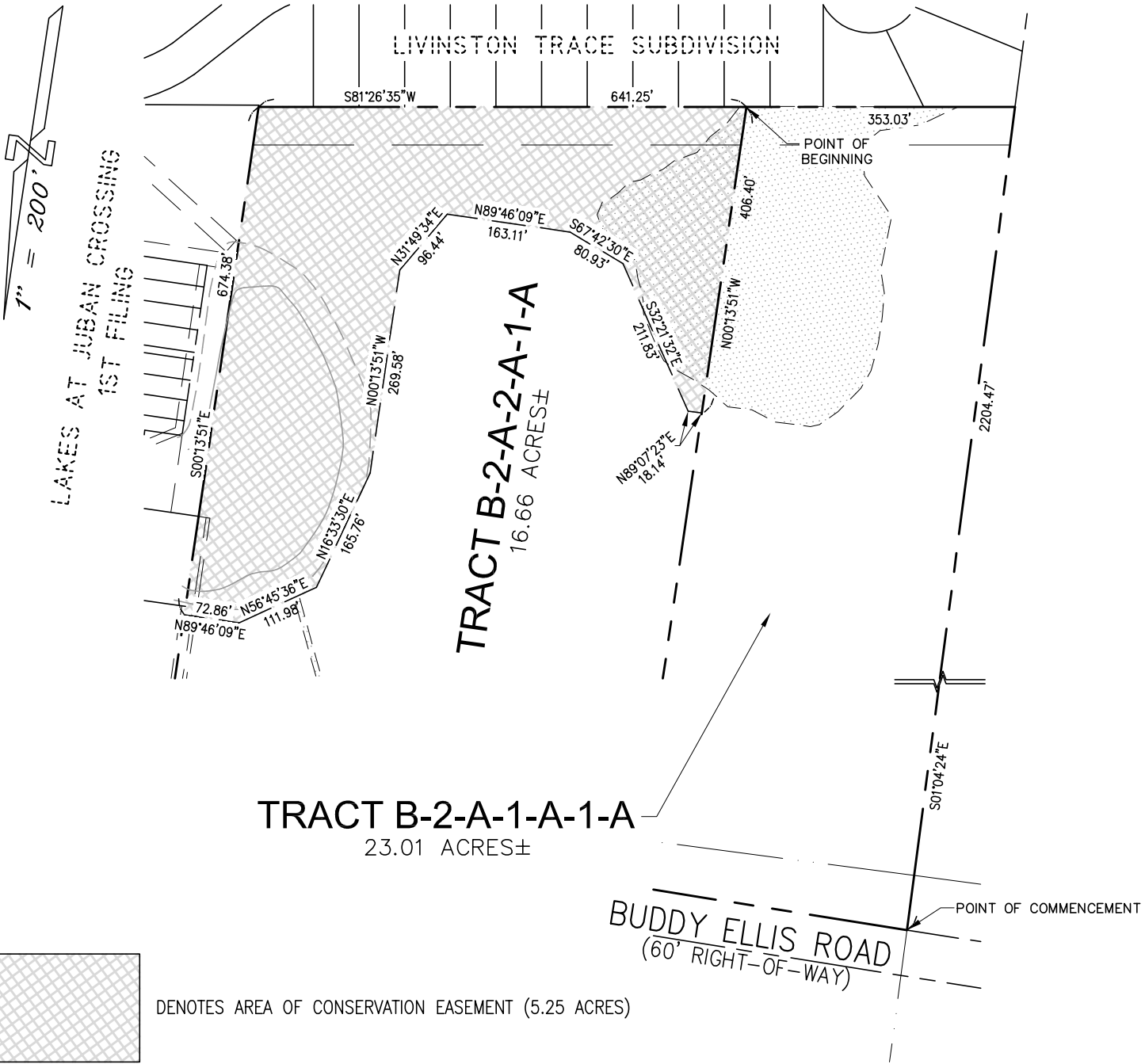


LIVINGSTON TRACE SUBDIVISION



MAP SHOWING EXHIBIT
OF
CONSERVATION EASEMENT
THE PALMS

LOCATED IN SECTIONS 3 & 10, TOWNSHIP 7 SOUTH, RANGE 3 EAST,
GREENSBURG LAND DISTRICT, LIVINGSTON PARISH, LOUISIANA



BENCHMARK GROUP, L.L.C.

LAND SURVEYING • CIVIL ENGINEERING • LAND PLANNING • LANDSCAPE ARCHITECTURE

11328 PENNYWOOD AVENUE, BATON ROUGE, LOUISIANA 70809
PHONE: 225.368.2475 - FAX: 225.368.2476 - WWW.BENCHMARKGROUPLLC.COM

PROJECT NO.: 17-035

FILE NAME: Palms Conservation Easement

DRAWN BY: MC

DATE: 4/17/17

LEGAL DESCRIPTION: CONSERVATION EASEMENT

A CERTAIN TRACT OR PARCEL OF LAND CONTAINING 5.25 ACRES, MORE OR LESS, LOCATED IN SECTIONS 3 & 10, TOWNSHIP 7 SOUTH, RANGE 3 EAST, GREENSBURG LAND DISTRICT, LIVINGSTON PARISH, LOUISIANA AND BEING MORE PARTICULARLY DESCRIBED AS FOLLOWS:

COMMENCING AT THE NORTH EAST CORNER OF TRACT B-2-A-1-A-1-A AND SOUTH RIGHT OF WAY LINE OF BUDDY ELLIS ROAD, THENCE SOUTH 01 DEGREES 04 MINUTES 24 SECONDS EAST A DISTANCE OF 2204.47 FEET; THENCE S 81 DEGREES 26 MINUTES 35 SECONDS WEST A DISTANCE OF 353.03 FEET TO THE POINT OF BEGINNING.

THENCE NORTH 89 DEGREES 07 MINUTES 23 SECONDS EAST A DISTANCE OF 18.14 FEET;

THENCE SOUTH 32 DEGREES 21 MINUTES 32 SECONDS EAST A DISTANCE OF 211.83 FEET;

THENCE SOUTH 67 DEGREES 42 MINUTES 30 SECONDS EAST A DISTANCE OF 80.93 FEET;

THENCE NORTH 89 DEGREES 46 MINUTES 09 SECONDS EAST A DISTANCE OF 163.11 FEET;

THENCE NORTH 31 DEGREES 49 MINUTES 34 SECONDS EAST A DISTANCE OF 96.44 FEET;

THENCE NORTH 00 DEGRESS 13 MINUTES 51 SECONDS WEST A DISTANCE OF 269.58 FEET;

THENCE NORTH 16 DEGREES 33 MINUTES 30 SECONDS EAST A DISTANCE OF 165.76 FEET;

THENCE NORTH 56 DEGREES 45 MINUTES 36 SECONDS EAST A DISTANCE OF 111.98 FEET;

THENCE NORTH 89 DEGREES 46 MINUTES 09 SECONDS EAST A DISTANCE OF 72.86 FEET;

THENCE SOUTH 00 DEGREES 13 MINUTES 51 SECONDS EAST A DISTANCE OF 674.38 FEET;

THENCE SOUTH 81 DEGREES 26 MINUTES 35 SECONDS WEST A DISTANCE OF 641.25 FEET TO THE POINT OF BEGINNING.

SAID PROPERTY DESCRIBED HEREIN CONTAINS 5.25 ACRES MORE OR LESS.

MAP SHOWING EXHIBIT

OF

**CONSERVATION EASEMENT
THE PALMS**

LOCATED IN SECTIONS 3 & 10, TOWNSHIP 7 SOUTH, RANGE 3 EAST,
GREENSBURG LAND DISTRICT, LIVINGSTON PARISH, LOUISIANA



BENCHMARK GROUP, L.L.C.
LAND SURVEYING • CIVIL ENGINEERING • LAND PLANNING • LANDSCAPE ARCHITECTURE

11328 PENNYWOOD AVENUE, BATON ROUGE, LOUISIANA 70809
PHONE: 225.368.2475 - FAX: 225.368.2476 - WWW.BENCHMARKGROUPLLC.COM

PROJECT NO.: 17-035

FILE NAME: Palms Conservation Easement

DRAWN BY: MC

DATE: 4/17/17