

Exhibit "A-1"
Legal Description of Property

Part of the Northeast One-Quarter of Section 8, Township 13 South, Range 23 East, in the City of Olathe, Johnson County, Kansas, being more particularly described as follows:

Commencing at the Northwest corner of the Northeast One-Quarter of said Section 8; thence South 03 degrees 04 minutes 31 seconds East, along the West line of the said Northeast One Quarter, a distance of 555.24 feet to the Southwest corner of Lot 6, CEDAR CREEK VILLAGE I, TWENTYEIGHTH PLAT a subdivision in the City of Olathe as recorded in book 201210 at page 002215, said corner being the POINT OF BEGINNING; thence North 74 degrees 54 minutes 19 seconds East along the South line of said Lot 6, a distance of 98.86 feet; thence North 37 degrees 47 minutes 08 seconds East along the South line of said Lot 6, a distance of 50.41 feet; thence South 66 degrees 30 minutes 14 seconds East a distance of 37.23 feet; thence North 34 degrees 46 minutes 03 seconds East a distance of 42.24 feet to a point of curvature; thence Northeasterly, Easterly and Southeasterly on a curve to the right, tangent to the previous course, having a radius of 220.00 feet, a central angle of 87 degrees 07 minutes 51 seconds and an arc length of 334.56 feet to a point of reverse curvature; thence Southeasterly, Easterly and Northeasterly on a curve to the left having a radius of 400.00 feet, a central angle of 44 degrees 27 minutes 29 seconds and an arc length of 310.38 feet; thence North 77 degrees 24 minutes 21 seconds East a distance of 60.93 feet to a point on the West line of Tract "G", HIDDEN LAKE ESTATES, SECOND PLAT, a subdivision in the City of Olathe as recorded in book 201611 at page 010256, said point being a point of curvature; thence along the West line of said Tract "G" for the following two courses, Southeasterly on a curve to the left having an initial tangent bearing of South 29 degrees 02 minutes 21 seconds East, a radius of 562.00 feet, a central angle of 16 degrees 38 minutes 17 seconds and an arc length of 163.20 feet; thence South 45 degrees 40 minutes 38 seconds East a distance of 264.89 feet to a point on the North line of Lot 2, HIDDEN LAKE ESTATES, FIRST PLAT, a subdivision in the City of Olathe as recorded in book 201511 at page 001058; thence along the Northerly and Westerly line of said HIDDEN LAKE ESTATES, FIRST

PLAT, for the following five courses, North 74 degrees 45 minutes 06 seconds West a distance of 518.55 feet; thence South 54 degrees 52 minutes 46 seconds West a distance of 554.89 feet; thence South 41 degrees 40 minutes 06 seconds East a distance of 230.38 feet; thence South 70 degrees 33 minutes 22 seconds West a distance of 182.71 feet; thence South 26 degrees 24 minutes 14 seconds West a distance of 245.27 feet to a point on the West line of said Northeast One-Quarter; thence North 03 degrees 04 minutes 31 seconds West along said West line a distance of 841.78 feet to the Point of Beginning and containing 8.541 acres, more or less.

TOGETHER WITH

Part of the Northeast One-Quarter of Section 8, Township 13 South, Range 23 East, in the City of Olathe, Johnson County, Kansas, being more particularly described as follows:

Commencing at the Northwest corner of the Northeast One-Quarter of said Section 8 ; thence South 03 degrees 04 minutes 31 seconds East along the West line of said Northeast One-Quarter, a distance of 1679.60 feet to a point on the South line of Lot 21, HIDDEN LAKE ESTATES, FIRST PLAT, a subdivision in the City of Olathe as recorded in book 201511 at page 001058, said point being the Point of Beginning; thence along the South line of said HIDDEN LAKE ESTATES, FIRST PLAT, for the following three courses, South 63 degrees 35 minutes 46 seconds East a distance of 412.22 feet; thence South 38 degrees 32 minutes 15 seconds East a distance of 149.70 feet; thence South 63 degrees 02 minutes 33 seconds East a distance of 217.29 feet; thence South 85 degrees 33 minutes 31 seconds East a distance of 158.28 feet; thence South 60 degrees 20 minutes 40 seconds East a distance of 310.25 feet; thence South 43 degrees 14 minutes 15 seconds East a distance of 65.60 feet; thence South 48 degrees 07 minutes 59 seconds West a distance of 132.36 feet; thence North 57 degrees 40 minutes 58 seconds West a distance of 291.15 feet; thence South 87 degrees 34 minutes 03 seconds West a distance of 257.03 feet; thence North 71 degrees 04 minutes 02 seconds West a distance of 433.79 feet; thence North 86 degrees 21 minutes 32 seconds West a distance of 94.98 feet to a point on the West line of said Northeast One-Quarter; thence North 03 degrees 04 minutes 31 seconds West along said West line, a

distance of 409.88 feet to the Point of Beginning, and containing 5.882 acres, more or less.

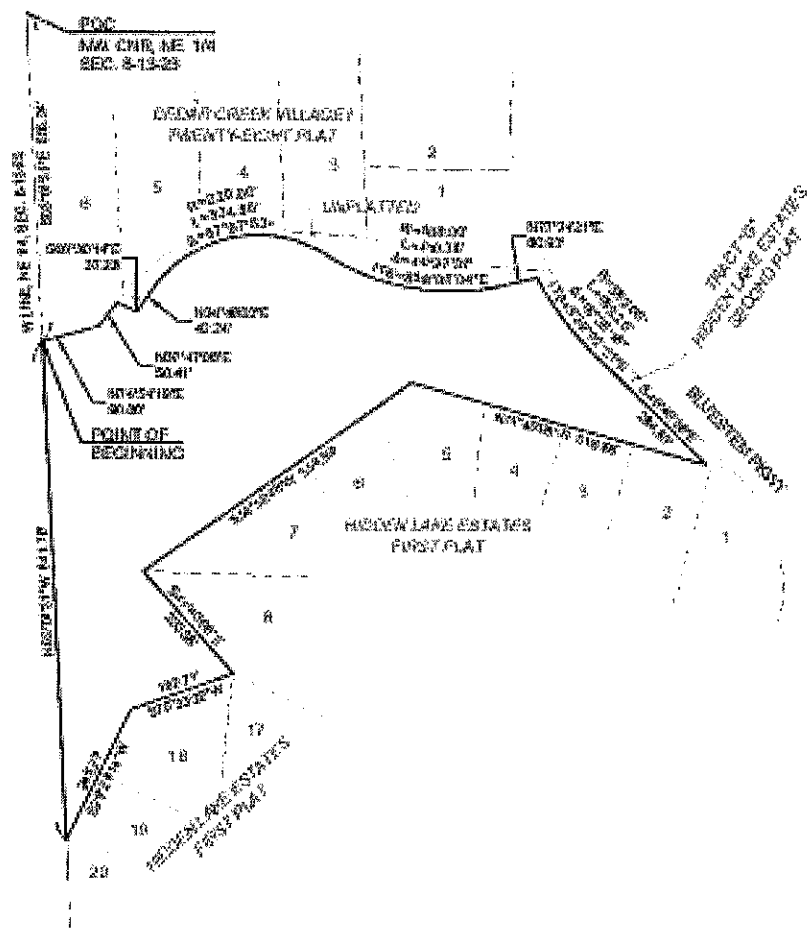
TOGETHER WITH

Part of the Northeast One-Quarter of Section 8, Township 13 South, Range 23 East, in the City of Olathe, Johnson County, Kansas, being more particularly described as follows:

Commencing at the Northeast corner of the Northeast One-Quarter of said Section 8; thence South 02 degrees 21 minutes 06 seconds East along the East line of said Northeast One-Quarter, a distance of 1829.92 feet to the Point of Beginning; thence continuing South 02 degrees 21 minutes 06 seconds East along said East line, a distance of 259.15 feet; thence South 14 degrees 45 minutes 11 seconds West a distance of 35.68 feet; thence South 00 degrees 47 minutes 52 seconds East a distance of 141.74 feet; thence South 09 degrees 53 minutes 29 seconds West a distance of 188.81 feet; thence South 00 degrees 01 minutes 11 seconds West a distance of 175.00 feet to a point on the South line of said Northeast One-Quarter; thence South 87 degrees 47 minutes 46 seconds West along said South line, a distance of 140.88 feet; thence North 03 degrees 23 minutes 50 seconds West a distance of 183.16 feet; thence North 12 degrees 13 minutes 41 seconds West a distance of 77.51 feet; thence North 28 degrees 48 minutes 43 seconds East a distance of 202.09 feet; thence North 00 degrees 27 minutes 31 seconds East a distance of 206.16 feet; thence North 44 degrees 01 minutes 27 seconds West a distance of 234.52 feet; thence North 25 degrees 56 minutes 15 seconds West a distance of 86.77 feet; thence North 61 degrees 44 minutes 23 seconds West a distance of 449.47 feet; thence North 72 degrees 54 minutes 44 seconds West a distance of 284.73 feet to a point on the East line of Lot 46, HIDDEN LAKE ESTATES, SECOND PLAT, a subdivision in the City of Olathe as recorded in book 201611 at page 010256; thence North 09 degrees 15 minutes 17 seconds East, along the East line of said HIDDEN LAKE ESTATES, SECOND PLAT, a distance of 172.53 feet; thence North 64 degrees 00 minutes 09 seconds West, along the Northeasterly line of HIDDEN LAKE ESTATES, SECOND PLAT and its Northwesterly extension, a distance of 493.74 feet to a point on the East line of Tract "F", HIDDEN LAKE ESTATES, SECOND PLAT, said point being a point of curvature; thence along the East line of said Tract "F" for the

following three courses, Northwesterly along a curve to the left having an initial tangent bearing of North 02 degrees 44 minutes 08 seconds West, a radius of 355.00 feet, a central angle of 42 degrees 56 minutes 28 seconds and an arc length of 266.06 feet; thence North 45 degrees 40 minutes 38 seconds West a distance of 299.04 feet to a point of curvature; thence Northwesterly along a curve to the right tangent to the previous course, having a radius of 423.00 feet, a central angle of 07 degrees 44 minutes 18 seconds and an arc length of 57.13 feet; thence South 83 degrees 01 minutes 25 seconds East a distance of 345.09 feet; thence South 26 degrees 01 minutes 24 seconds East a distance of 310.00 feet; thence South 78 degrees 01 minutes 24 seconds East a distance of 160.00 feet; thence South 38 degrees 01 minutes 24 seconds East a distance of 390.00 feet; thence South 64 degrees 31 minutes 24 seconds East a distance of 500.00 feet; thence South 51 degrees 01 minutes 24 seconds East a distance of 210.00 feet; thence South 24 degrees 01 minutes 24 seconds East a distance of 275.00 feet; thence North 89 degrees 43 minutes 18 seconds East a distance of 139.66 feet to the Point of Beginning, and containing 10.585 acres, more or less.


EXHIBIT "A"
CONSERVATION AREA EXHIBIT
CCV 13E (1)



1: P:\PROJECTS\2016\16-0095-D-Conservation\CCV 13E (1) CCV 13E (1) Conservation Exhibit.dwg, 11/15/16, 11:52:00 AM



DRAWN BY	JMT
TRACED BY	BA
CHECKED	12-27-2016
PLOTTED BY	12-28-16
SCALE	1" = 200'
SHEET	1 OF 1

	SCHLAGEL & ASSOCIATES, P.A. Engineers • Planners • Surveyors • Landscape Architects
	16401 West 107th Street • Overland Park, Kansas 66215 www.schlagelassociates.com • 913.415.5150 • Fax: 913.415.5150 Kansas State Certification of Authority KC.020 P.L.A.20 W.S.54
CONSERVATION EXHIBIT	

