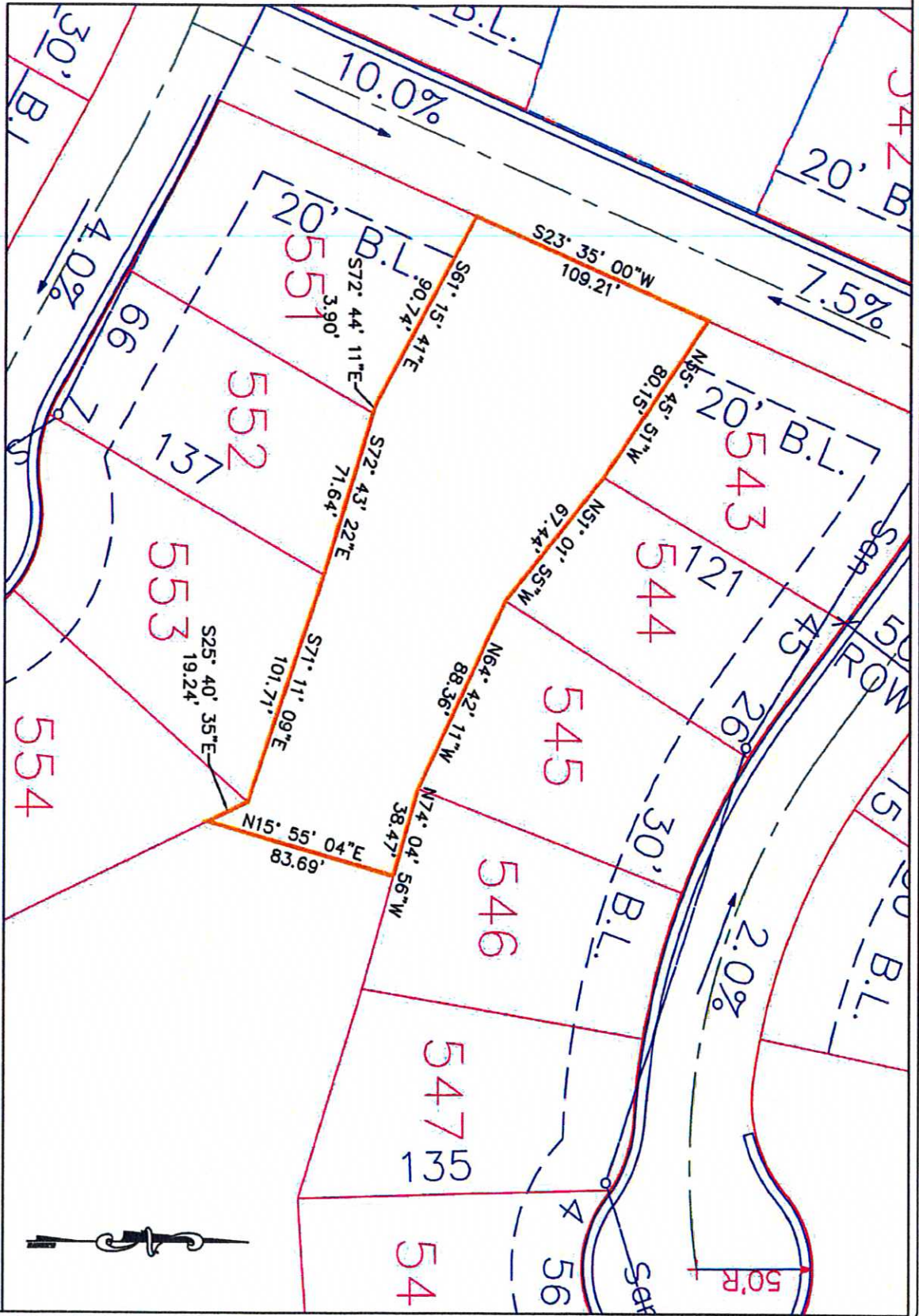


Exhibit A



DATE	06/23/11
BY	...
FOR	...
SCALE	1" = 60'
PROJECT	Conservation Easement Boundary
PERMIT	Corps of Engineer Permit #2007-2219
CLIENT	Habitat Kansas LLC

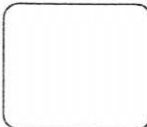
 **Terra Technologies**
 1920 W. 143rd St., Ste. 140
 Leawood, Kansas 66224
 Tel 913.385.9360 Fax 913.385.5295

Exhibit A

LEGAL DESCRIPTION

Commencing in the Northwest corner of the East $\frac{1}{2}$ of Section 16; thence South 01 degrees 42 minutes 56 seconds East, a distance of 1173.08 feet; thence North 87 degrees 02 minutes 41 seconds East, a distance of 509.99 feet; thence South 02 degrees 57 minutes 23 seconds East, a distance of 518.19 feet; thence North 90 degrees 00 minutes 00 seconds East, a distance of 275.64 feet; thence South 00 degrees 00 minutes 00 seconds East, a distance of 26.07 feet to the point of beginning; thence South 23 degrees 35 minutes 00 seconds West, a distance of 109.21 feet; thence South 61 degrees 15 minutes 41 seconds East, a distance of 90.74 feet; thence South 72 degrees 44 minutes 11 seconds East, a distance of 3.90 feet; thence South 72 degrees 43 minutes 22 seconds East, a distance of 71.64 feet; thence South 71 degrees 11 minutes 09 seconds East, a distance of 101.71 feet; thence South 25 degrees 40 minutes 35 seconds East, a distance of 19.24 feet; thence North 15 degrees 55 minutes 04 seconds East, a distance of 83.69 feet; thence North 74 degrees 04 minutes 56 seconds West, a distance of 38.47 feet; thence North 64 degrees 42 minutes 11 seconds West, a distance of 88.36 feet; thence North 51 degrees 01 minutes 55 seconds West, a distance of 67.44 feet; thence North 55 degrees 45 minutes 51 seconds West, a distance of 80.15 feet to the point of beginning. The above-described tract contains 23738.4506 square feet or 0.54 acres, more or less.

DATE	08/22/13
BY	[Signature]
PROJECT	Conservation Easement Legal Description
CLIENT	Corps of Engineer Permit #2007-2219
	Habitat Kansas LLC



Terra Technologies
1920 W. 143rd St., Ste. 140
Leawood, Kansas 66224
Tel: 913.385.9560 Fax: 913.385.9295